

PQ Labs AirScreen User Guide

Version 1.4

Copyright © 2018 PQLabs. All Rights Reserved

AirScreen User Guide

Part 1. About AirScreen	2
1.1 Instruction	2
1.2 How it work	2
1.3 Recommend Configuration.....	2
1.3.1 AirScreen Server.....	2
1.3.2 AirScreen Client.....	2
1.4 Support Operation System	3
* Requirements for using AirPlay.....	3
Part 2. AirScreen Installation	4
2.1 Install AirScreen Server.....	4
2.1.1 Install AirScreen Server PC Version	4
2.1.2 Install AirScreen Server Android Version	5
2.2 Install AirScreen Client.....	6
2.2.1 Install AirScreen Client PC Version.....	4
2.2.2 Install AirScreen Client Android Version.....	5
Part 3. Detail Steps	7
3.1 Operation for AirScreen Server	8
3.1.1 Operation for AirScreen PC Server	8
3.1.2 Operation for AirScreen Android Server	10
3.2 Operation for AirScreen Client.....	11
3.2.1 Operation for AirScreen PC Client	11
3.2.2 Operation for AirScreen iOS/Mac Client.....	13
3.2.3 Operation for AirScreen iOS/Mac Client.....	13

Part 1. About AirScreen

1.1 Instruction

AirScreen is software which can “replication” client computer to the server side in the network, and it can bilateral control from client side or server side.

It has 2 parts: Server side and Client side.

1.2 How it work

You can control all computers by connecting both AirScreen Client side and Server side.

1.3 Recommend Configuration

1.3.1 AirScreen Server

A. AirScreen Server PC Version:

Standard Configuration	
Operation System	Win7/8/8.1/10
CPU	I5 4330
Memory	4GB DDR3 1333
Graphics Card	HD7700/650TI
Hard Disk	Solid State Disk
Software	Office 2013
Recommend	1920*1080
Network	Wired Network

B. AirScreen Server Android Version:

iStick A200\iStick A300\ iStick A350\ iStick A300LT, Wired Network

1.3.2 AirScreen Client

A. AirScreen Client PC Version:

No special requirement.

Operation System: Win7/8/8.1/10

Recommend Resolution: 1920*1080

Network: Wi-Fi or Wired Network

B. AirScreen Client Android Version: (Only for AirScreen PC Server Live version)

Support Android Version 5.0 and later

C. AirScreen Client iOS\Mac Version: (Only for AirScreen PC Server Live version)


Use AirPlay to cast screen to the server

1.4 Support Operation System

AirScreen supports the following operation system:

- a. Win7\Win8\Win8.1\Win10
- b. Any version of iOS (Only for AirScreen PC Server Live version)
- c. Android 5.0 and later (Only for AirScreen PC Server Live version)

* Requirements for using AirPlay

Here's a quick way to find out if your Mac supports AirPlay: Choose Apple () menu > System Preferences, then click Displays. If you don't see a "Show mirroring options in the menu bar when available" checkbox, your Mac doesn't support AirPlay.

Minimum requirements for your Mac:

- Any of these Mac computers with OS X Mountain Lion v10.8 or later:
 - iMac (Mid 2011 or later)
 - Mac mini (Mid 2011 or later)
 - MacBook (Early 2015 or later)
 - MacBook Air (Mid 2011 or later)
 - MacBook Pro (Early 2011 or later)
 - Mac Pro (Late 2013 or later)

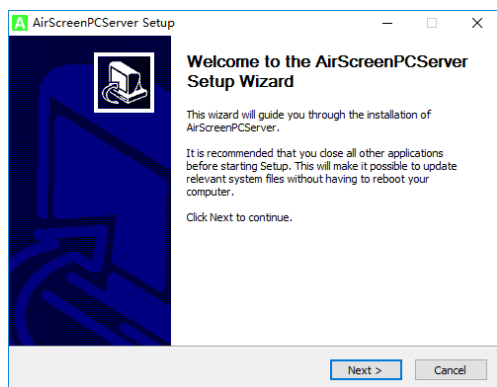
Read more from: <https://support.apple.com/en-us/HT201343>

Part 2. AirScreen Installation

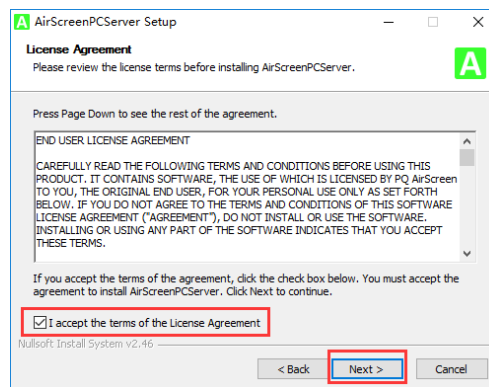
2.1 Install AirScreen Server

2.1.1 Install AirScreen Server PC Version

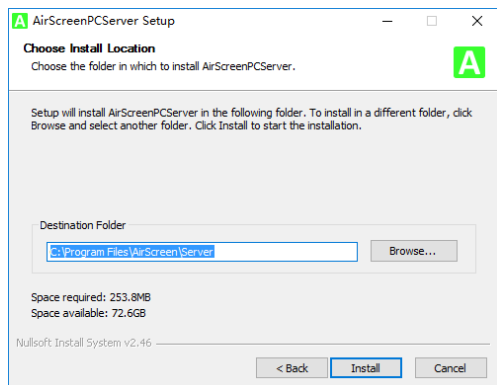
1. Double-click "AirScreenPCServerwithLive_Install_v3.6.exe", click "Next"



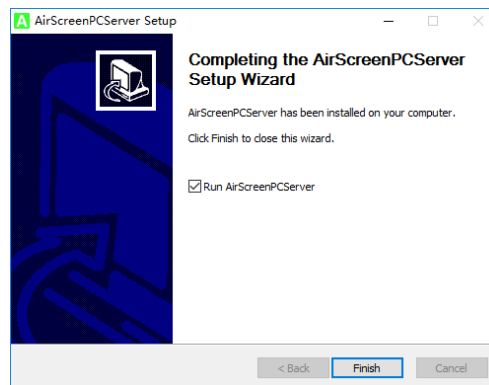
2. Choose "I accept the terms of the License Agreement", click "Next"



3. Choose destination folder then click "Install"



4. Click "Finish" to complete




2.1.2 Install AirScreen Server Android Version

Because iStick A300 serials already installed AirScreen, so you don't need to install it.

* If you want to use iStick A200, please download AirScreen Server Android Version from: <http://www.pqlabs.com/airscreen.html>

(1). Using SD card (or T card) to help you install

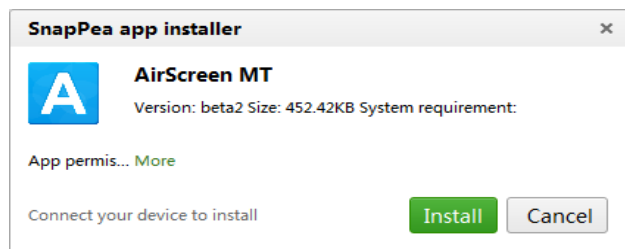
- a. Copy the download  PQAirScreenAndroidServer.apk to your SD card
- b. Insert the SD card in the red circle place



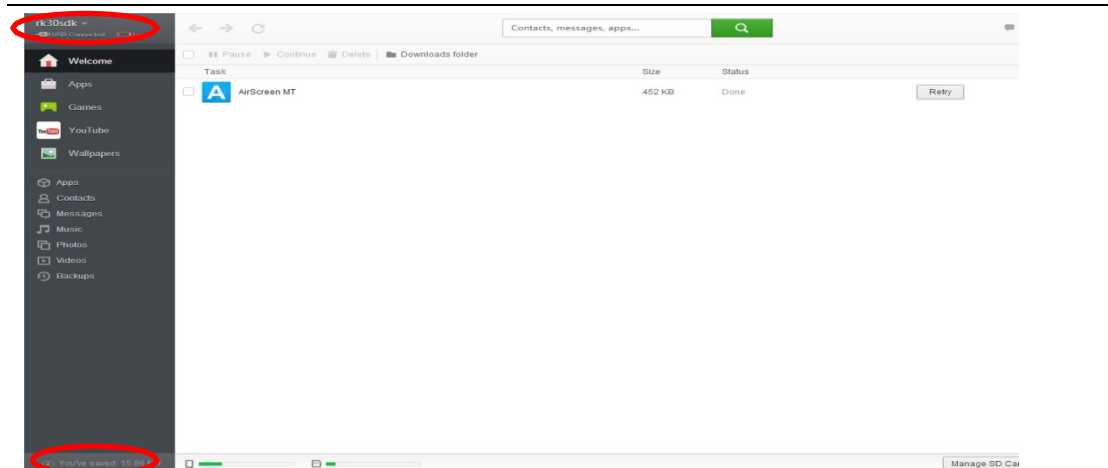
- c. Open "FileManager/Explorer" in the main menu
- d. Choose "SD card"
- e. Find and click the AirScreen Server.apk to install it

(2). Use "Snap Pea" to help you install

- a. Download & install Snap Pea on your computer from:
<http://www.wandoujia.com/>
- b. Connect iStick with provide power supply
- c. Connect iStick by provided Mini/Micro USB cable with your computer
- d. Double click the download Android Server version of AirScreen
- e. Double click the download Android Server version of AirScreen



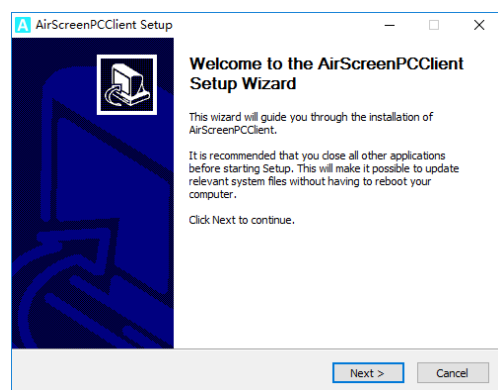
- f. Check the left bottom part to see whether AirScreen have installed successfully



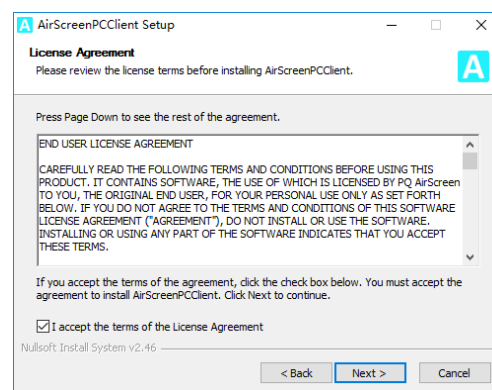
2.2 Install AirScreen Client

2.2.1 Install AirScreen Client PC Version

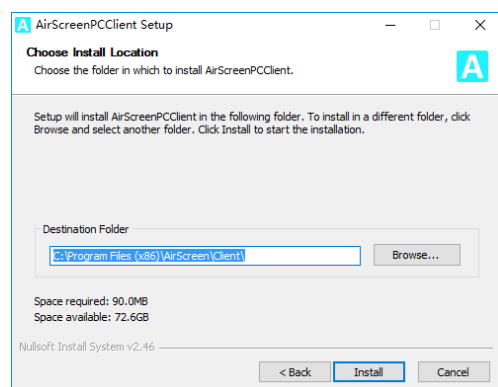
1. Double click [AirScreenPCCClient_Install_v3.5.exe](#), click "Next"



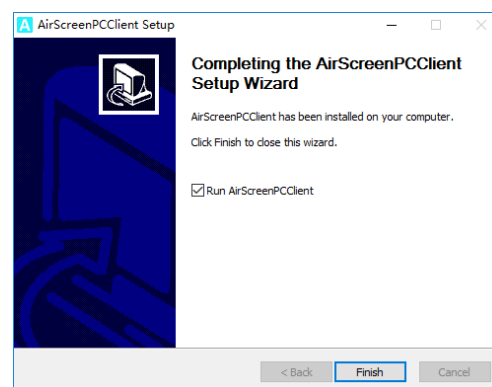
2. Tick "I accept the terms of the License Agreement", click "next"




3. Choose destination folder then click "Install"

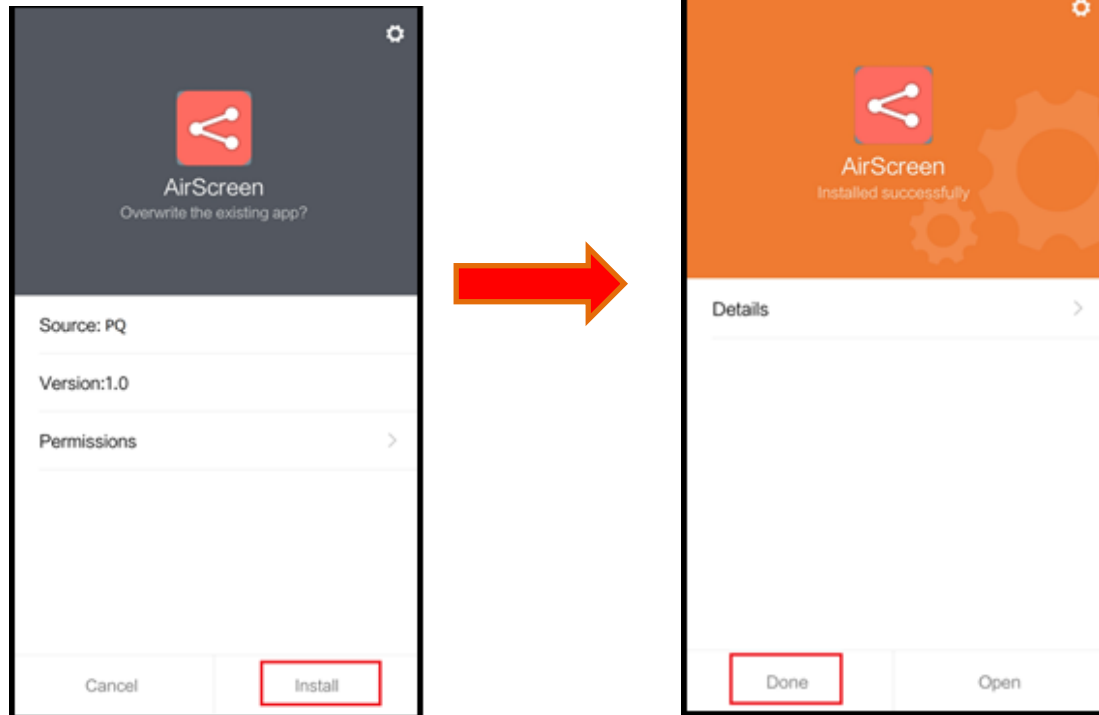


4. Click "Finish" to complete



2.2.2 Install AirScreen Client Android Version

Install the " AirScreenAndroidClient.apk" on your Android device (Android 5.0 or later)





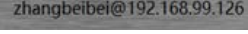
Part 3. Detail Steps


3.1 Operation for AirScreen Server Side


3.1.1 Operation for AirScreen PC Server Side

A. Main Interface



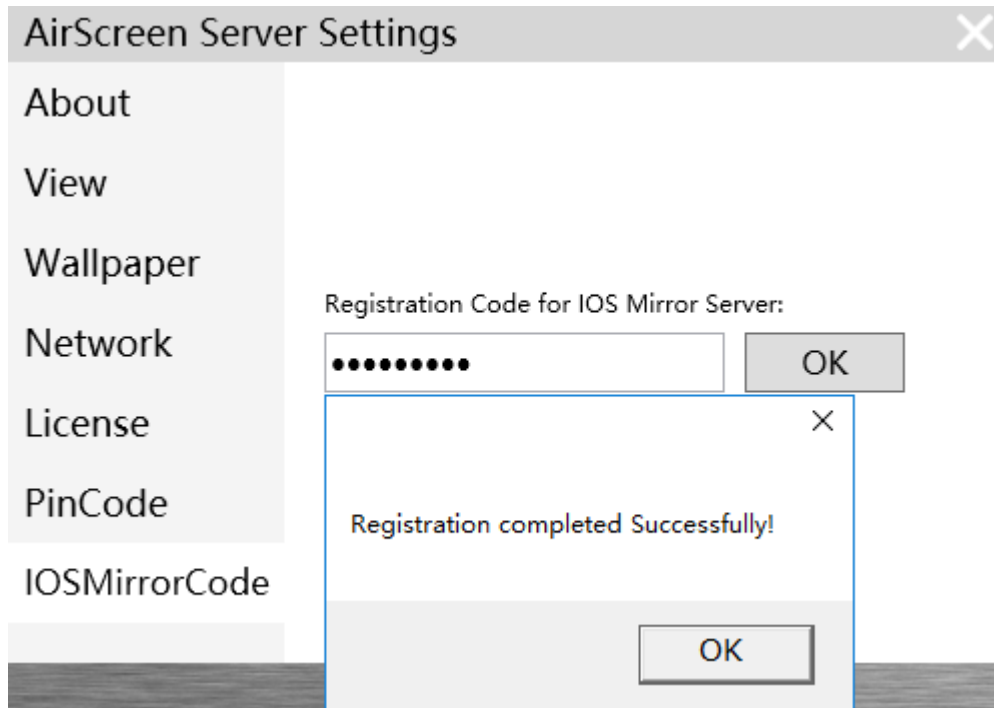
- a. Left bottom : close the application
- b. Right bottom : close the application
- c. Upper right : show running PC's name and the IP address

- d. : shows connected computers thumbnails and have the user name@computer name

- e. : shows not connected clients (default can show 8 clients)
- f. **License Expired**: trial version expired, please enter the License Key
- g. **PQ Touch Screen Disconnected**: PQ Touch Screen is disconnected

B. How to set

Click the upper right icon "☰" to enter the settings:



- a. **About:** shows the version of the AirScreen
- b. **View:** shows 4 or 8 clients in the interface of the AirScreen Server
- c. **Wallpaper:** you can set personalized wallpaper
- d. **Network:** Local Connection, Bluetooth, Ethernet, WLAN
- e. **License:** enter the license key to activate the software
- f. **PinCode:** pin code of the clients
- g. **IOSMirrorCode:** type in the iOS code to support the apple devices

If it shows "Registration failed", please try the steps below:

- 1) Check the network or switch to stable wired network to try again;
- 2) Close and restart the AirScreen Server, type in the iOS code and register again;
- 3) Make sure this iOS code was not used for the other PC.

Note:

- * Once reinstall the AirScreen Server, use the previous iOS code to register;
- * Each iOS code can only be used by one PC.

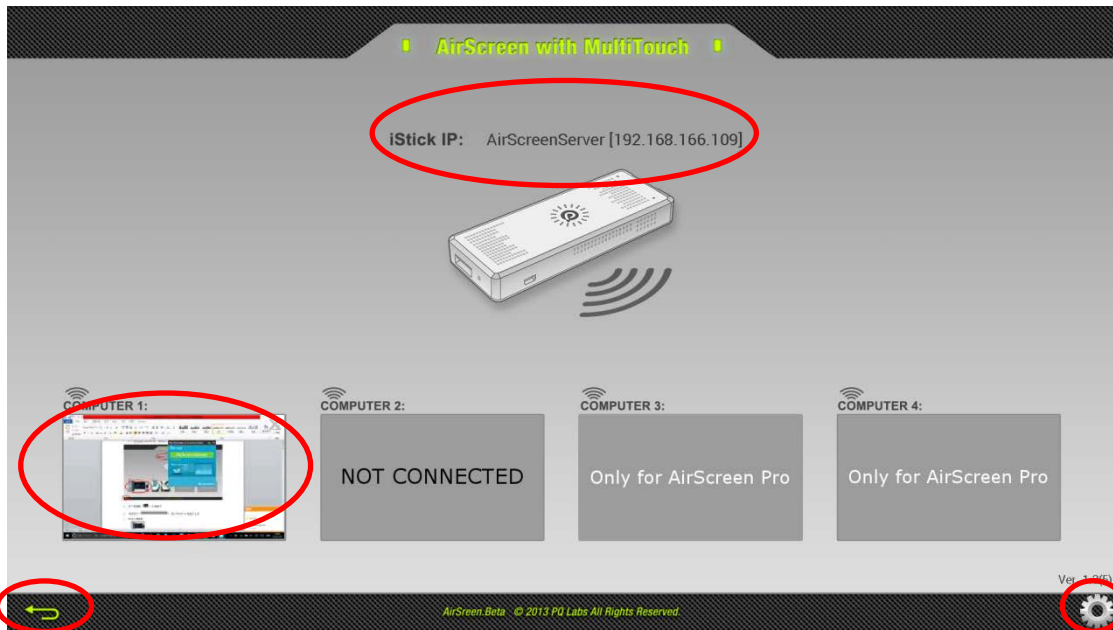
3.1.2 Operation for AirScreen Android Server

A. Open AirScreen Android Server

Find the AirScreen APK in the interface of the iStick

B. Main Interface

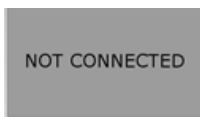
After open the AirScreen Android, you will see the main interface as below:



- Left bottom "⏪": close the application
- iStick IP "iStick IP: AirScreenServer [192.168.166.109]": show your iStick IP address
- 4 deep gray rectangles:



: shows connected computers thumbnails



: shows not connected clients (default can show 2 clients, Pro version can show 4 clients)

- "⚙️": open the setting to rename the Server



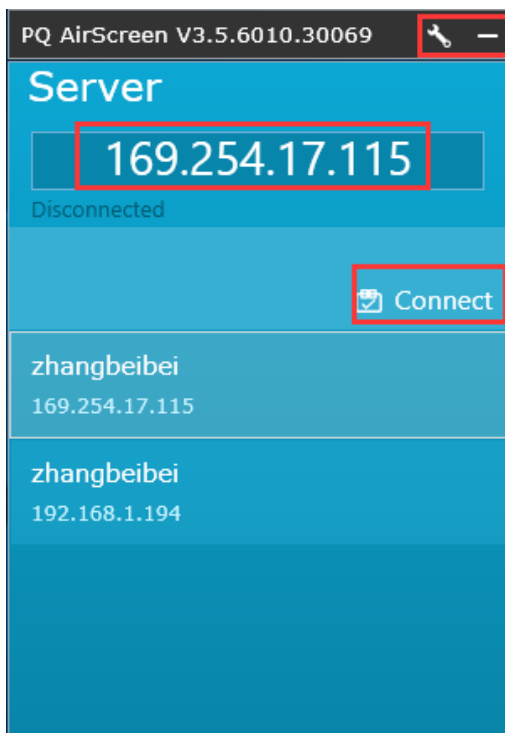
3.2 Operation for AirScreen Client



3.2.1 Operation for AirScreen PC Client

A. Interface






After opening the client side , you will see below:



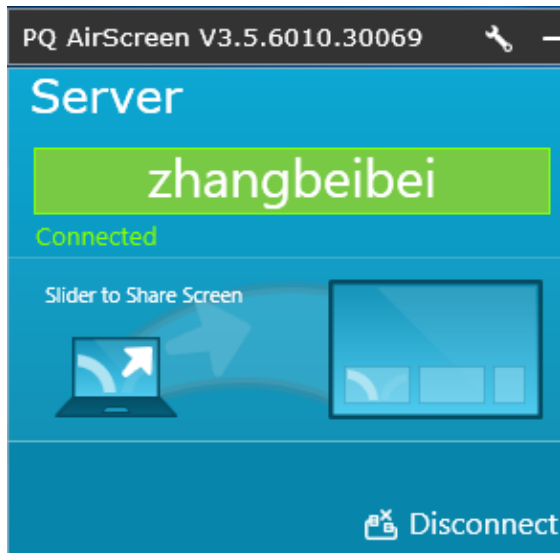
- a. Upper right "": minimize the application in the right bottom of taskbar
- b. Upper Right "": open the



settings

- c. Server IP "": the IP address of server side (you need to type it in if IP address in the different network segment, e.g.: 192.168.XXX.XXX)
- d. Connect button "": click "Connect" to connect Server side IP address
- e. Auto search available Server side IP address "": the client side will auto search existing Server side IP address, double click it will make it show in the "Server IP" (Condition for search: 1. Open Server side 2. In the same network segment e.g.: 192.168.XXX.XXX)

B. Client side connect Server

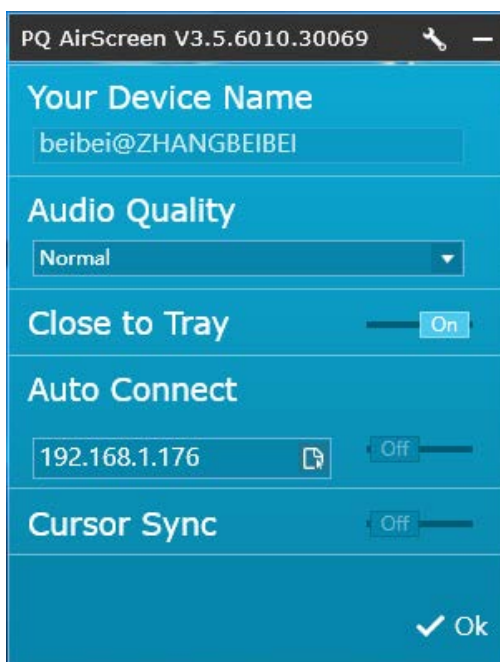
After client side connected server, it will show below:





- zhangbeibei** : The IP address of connected Server side
-  : Click or drag mouse from left to right, it will maximized show current client side on Server
-  : Disconnect with server

c. Settings


Click the "" to open settings, it will show as below:



- beibei@ZHANGBEIBEI** :
User name@computer name.
- Audio Quality** : Audio quality.
Optional: Normal\Mute\Low\High
- Close to Tray** :
On: Minimize to tray, show like 
Off: Close, show like 
- Auto Connect** : The client would auto connect to the server after opening the server
- Cursor Sync** : Cursor on the server is in sync with the client

3.2.2 Operation for AirScreen iOS/Mac Client

Use "AirPlay" to cast the content:

1. Keep the client and server are in the same network segment
2. Click the "AirPlay" in your iPhone
3. Choose "  AirScreen@ZHANGBEIBEI " and open "Mirroring"
4. Click "Done" to complete

